

# ULTIME D Patented

*Metalfire*

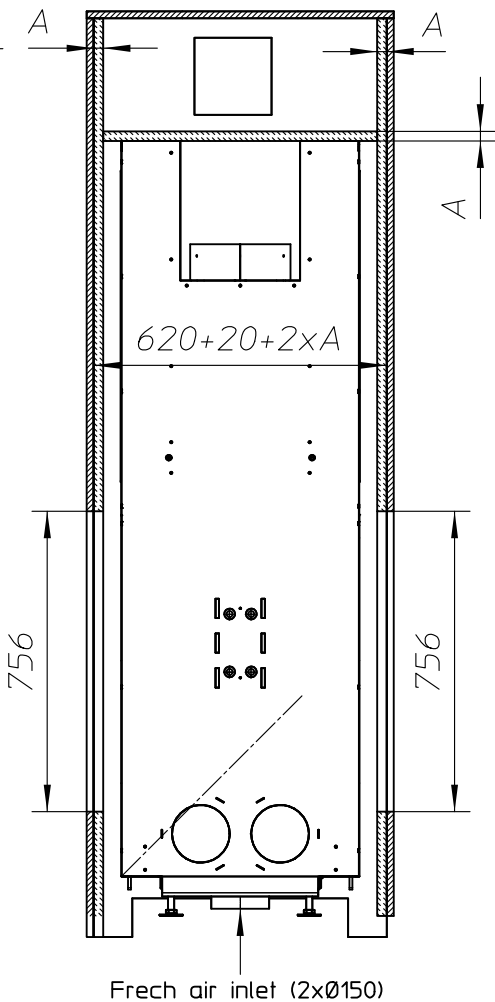
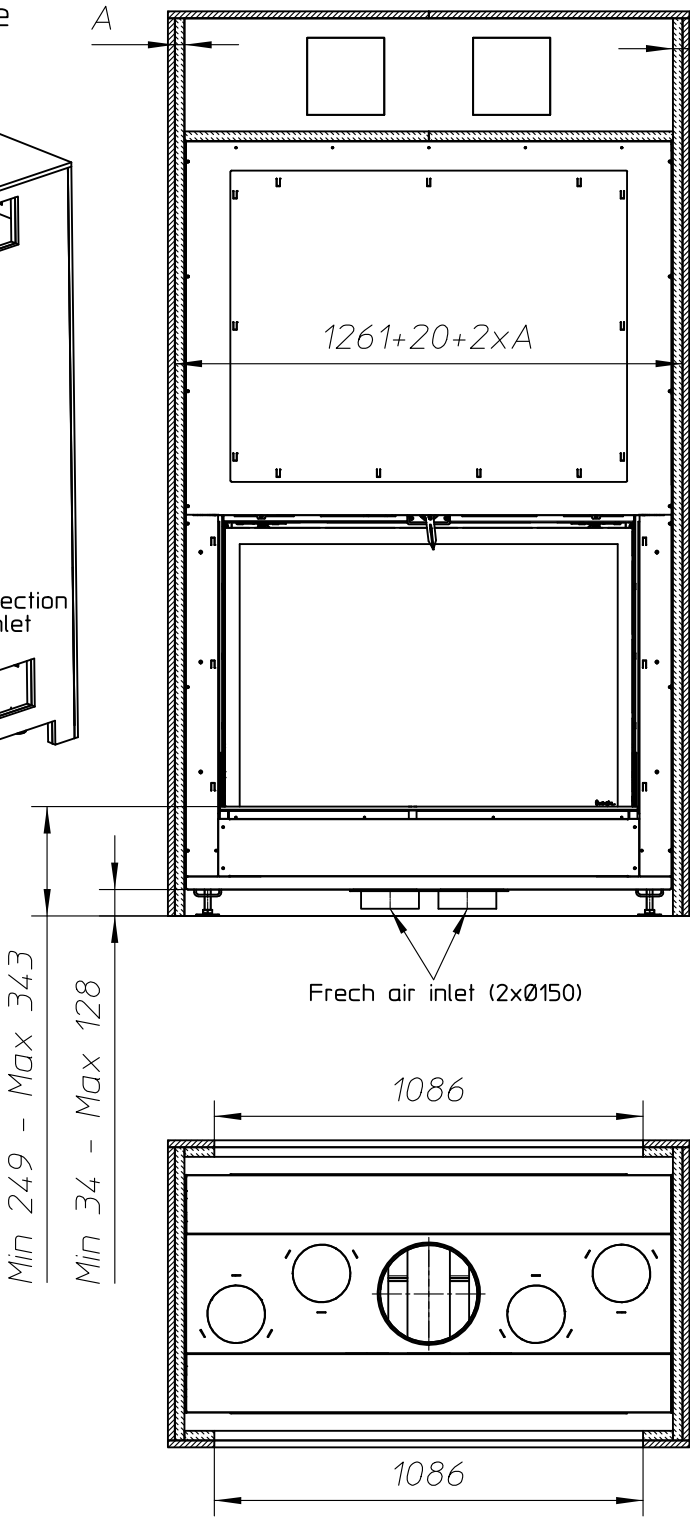
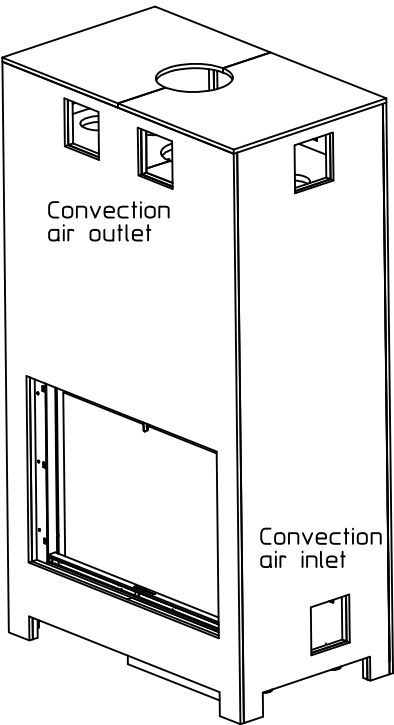
## Technical Document


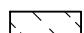
ULTIME D MF 1050-75 WHE T

Dimensions (mm)	
- combustion opening WxH:	1086 x 756
- external WxDxH:	1261 x 620 x 2069
- fresh air intake:	2 x Ø150
- flue gas outlet:	Ø250
Technical Data	
- ecolabel:	A
- capacity:	25.2kW
- efficiency:	79%
- CO (volume with 13%O <sub>2</sub> ):	0.05%
- dust (volume with 13%O <sub>2</sub> ):	30mg/Nm <sup>3</sup>
- weight:	400kg
- convection air inlet: min.700cm <sup>2</sup> (4 x Ø150)	
- convection air outlet: min.700cm <sup>2</sup> (4 x Ø150)	

First aid and technical support:	
- support@metalfire.eu	
- +32 9 261 51 90	
scale 1:20	Rev. B
www.metalfire.eu EN 13229	CE
General dimensional tolerances up to 6mm Metalfire preserves the right to modify specifications without previous notice	Sheet 1/5

Without finishing frame



 Combustable finishing material  
 Insulation (thickness see table)

ULTIME D  
Patented

Metalfire

Technical Document

ULTIME D MF 1050-75 WHE T

Prescribed insulation thickness (mm)

Combustable finishing material

Metalfire recommended  
SILCA T 300  
(TC = 0,09 W/mK)

A = 25mm

Non-combustable finishing material

non-combustable  
materials  
structural building items  
EXCLUDED e.g. load bearing walls

A = 0mm

TC = thermal conductivity    NC = non-combustable

First aid and technical support:  
- support@metalfire.eu  
- +32 9 261 51 90

scale 1:20

www.metalfire.eu    EN 13229

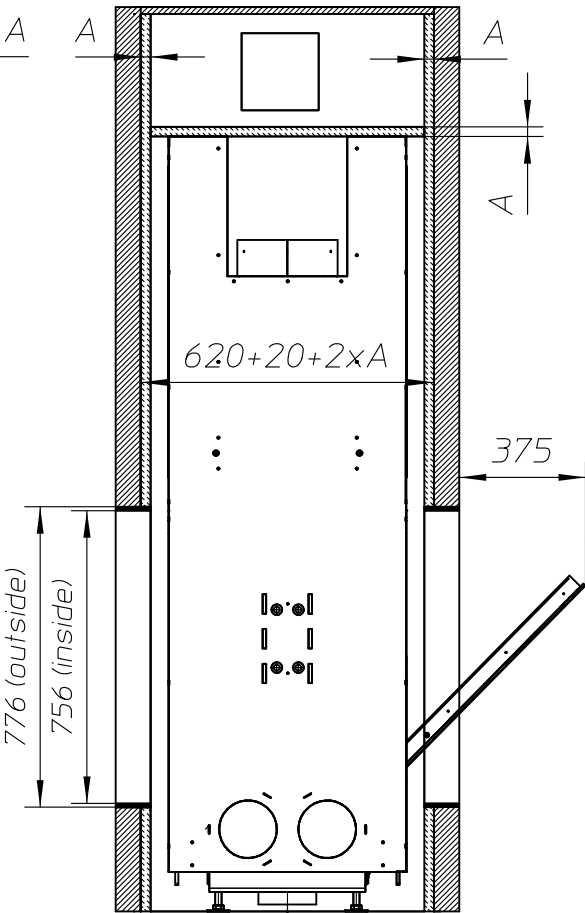
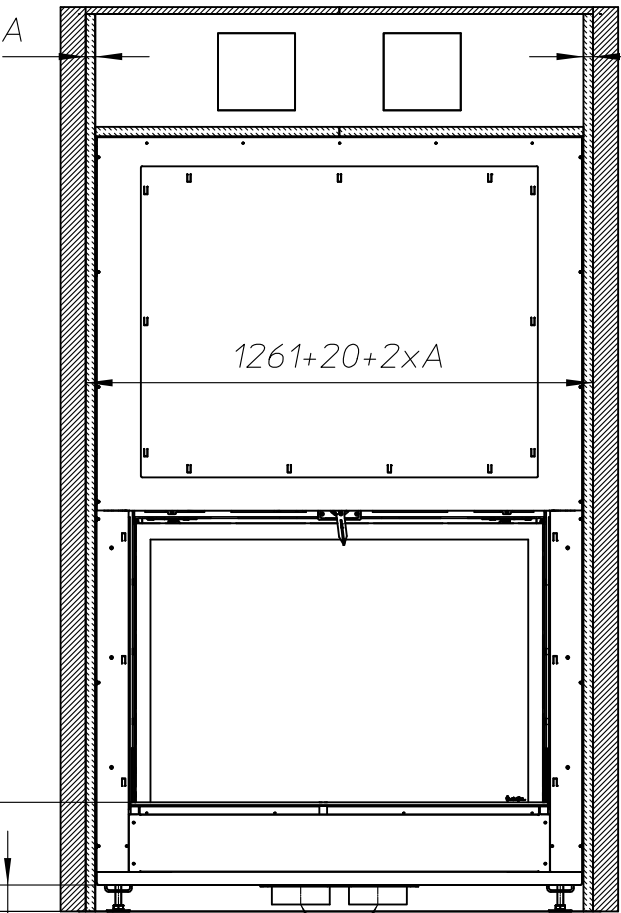
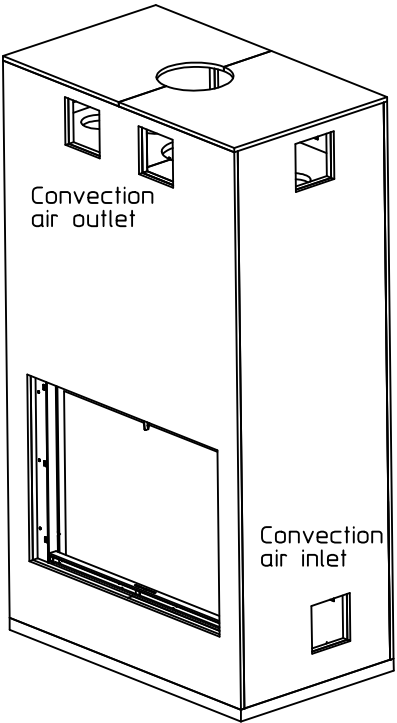
General dimensional tolerances up to 6mm  
Metalfire preserves the right to modify specifications without previous notice

Rev.  
B

CE

Sheet  
2/5

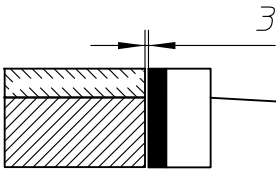
With finishing frame 90/10



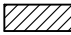
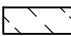
Min 249 - Max 343  
Min 34 - Max 128

Frech air inlet (2xØ150)

1106 (outside)  
1086 (inside)



Frech air inlet (2xØ150)

 Combustible finishing material  
 Insulation (thickness see table)

ULTIME D Patented

*Metalfire*

Technical Document

ULTIME D MF 1050-75 WHE T

Prescribed insulation thickness (mm)

Combustable finishing material

Metalfire recommended  
SILCA T 300  
(TC = 0,09 W/mK)

A = 25mm

Non-combustable finishing material

non-combustable  
materials  
structural building items  
EXCLUDED e.g. load bearing walls

A = 0mm

TC = thermal conductivity NC = non-combustable

First aid and technical support:

- support@metalfire.eu  
- +32 9 261 51 90

scale 1:20

www.metalfire.eu EN 13229

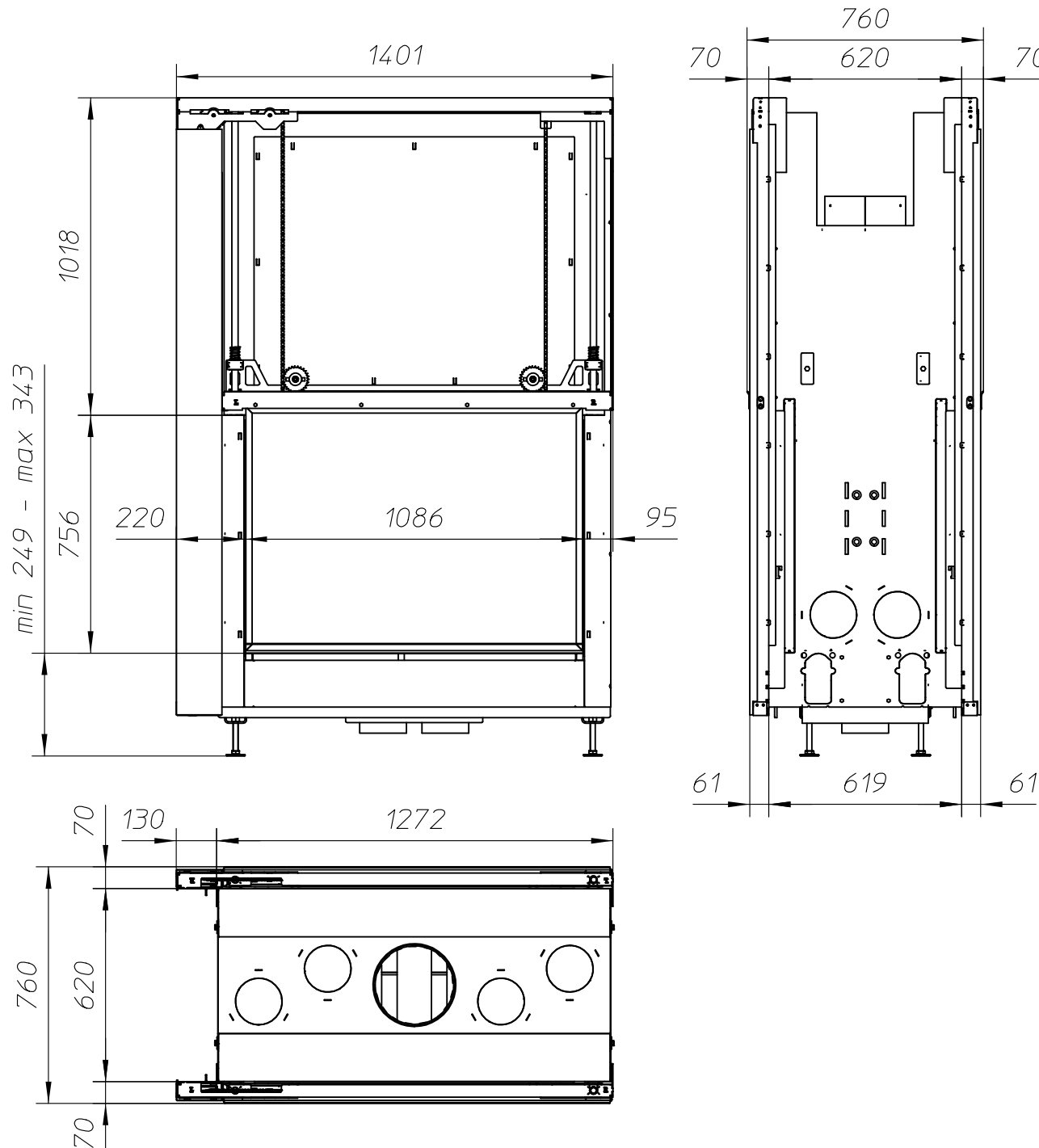
General dimensional tolerances up to 6mm  
Metalfire preserves the right to modify specifications without previous notice

Rev.  
B

CE

Sheet  
3/5

WITH 2 X FIRESCREEN - NO FINISHING FRAME



ULTIME D<sup>Patented</sup>

*Metalfire*

## Technical Document

ULTIME D MF 1050-75 WHE T

### Dimensions (mm)

- combustion opening WxH: 1086 x 756
- external WxDxH: 1401 x 760 x 2069
- fresh air intake: 2 x Ø150
- flue gas outlet: Ø250

### Technical Data

- ecolabel: A
- capacity: 25.2kW
- efficiency: 79%
- CO (volume with 13%O<sub>2</sub>): 0.05%
- dust (volume with 13%O<sub>2</sub>): 30mg/Nm<sup>3</sup>
- weight: 400kg
- convection air inlet: min.700cm<sup>2</sup> (4 x Ø150)
- convection air outlet: min.700cm<sup>2</sup> (4 x Ø150)

First aid and technical support:

- support@metalfire.eu

- +32 9 261 51 90

scale 1:20

www.metalfire.eu EN 13229

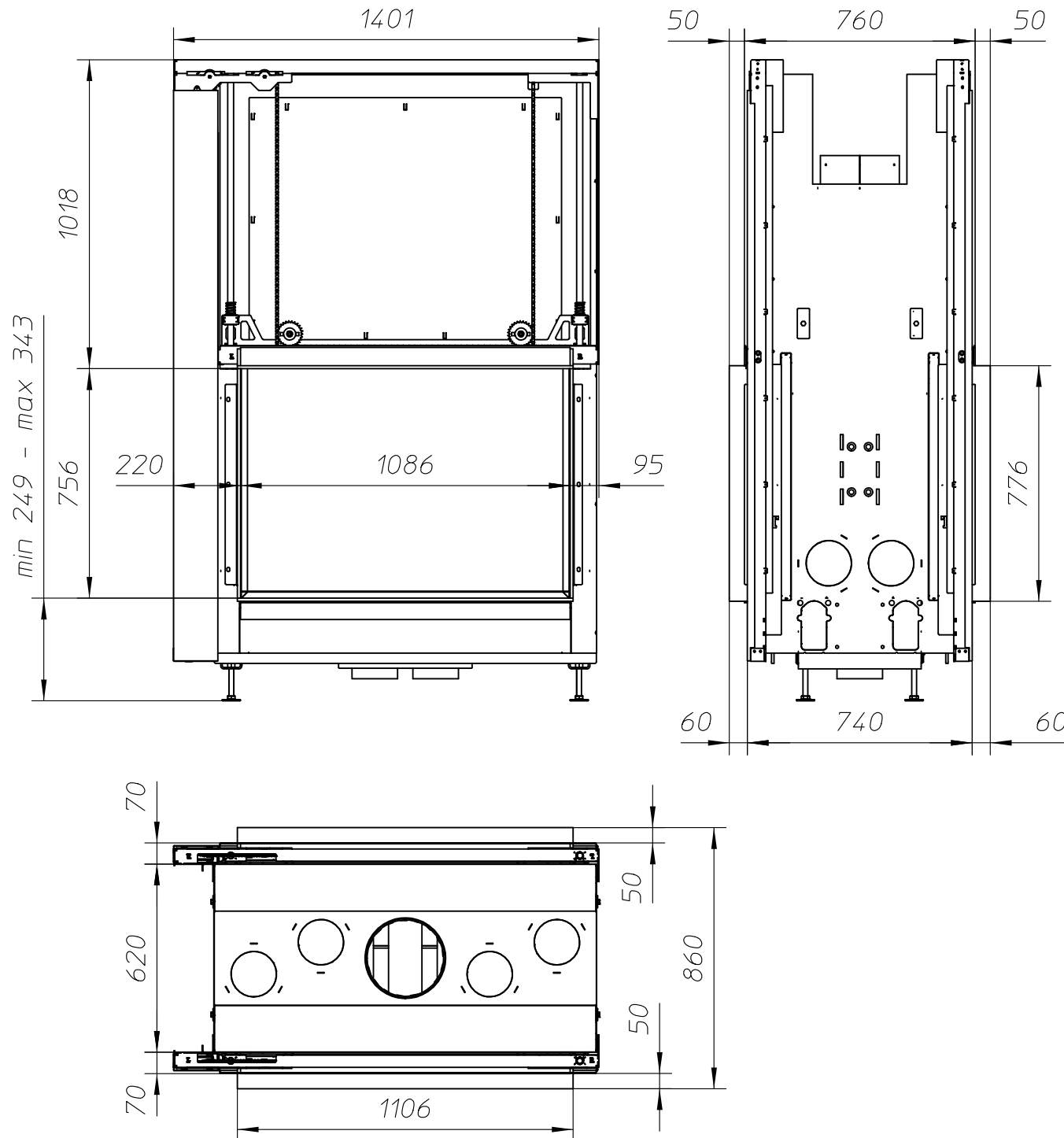
General dimensional tolerances up to 6mm  
Metalfire preserves the right to modify specifications without previous notice

Rev.  
B

CE

Sheet  
4/5

WITH 2 X FIRESCREEN AND FINISHING FRAME 120/10



ULTIME D Patented

*Metalfire*

## Technical Document

ULTIME D MF 1050-75 WHE T

### Dimensions (mm)

- combustion opening WxH: 1086 x 756
- external WxDxH: 1401 x 860 x 2069
- fresh air intake: 2 x Ø150
- flue gas outlet: Ø250

### Technical Data

- ecolabel: A
- capacity: 25.2kW
- efficiency: 79%
- CO (volume with 13%O<sub>2</sub>): 0.05%
- dust (volume with 13%O<sub>2</sub>): 30mg/Nm<sup>3</sup>
- weight: 400kg
- convection air inlet: min.700cm<sup>2</sup> (4 x Ø150)
- convection air outlet: min.700cm<sup>2</sup> (4 x Ø150)

First aid and technical support:

- support@metalfire.eu

- +32 9 261 51 90

scale 1:20

www.metalfire.eu EN 13229

General dimensional tolerances up to 6mm  
Metalfire preserves the right to modify specifications without previous notice

Rev.  
B

CE

Sheet  
5/5